



Residential Floor plans




EMERALD HEIGHTS®

A MEMBER OF EMERALD COMMUNITIES

STUDIO AND ONE-BEDROOM APARTMENTS



Welcome home.

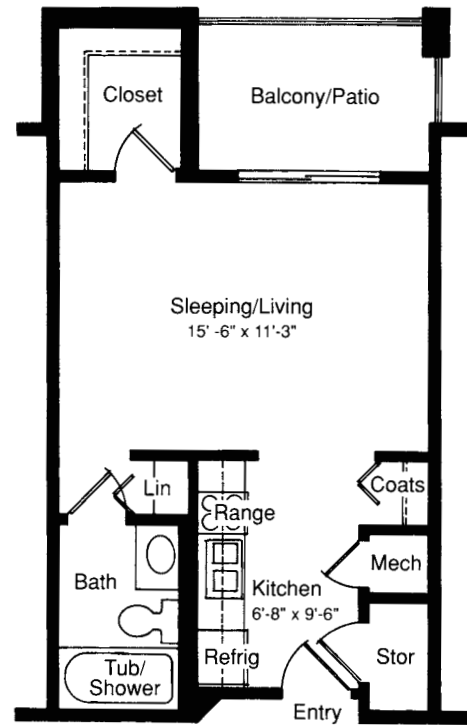
Emerald Heights offers a variety of floor plans to make it easy for you to find the one that's just right for you.

Each of the layouts has been carefully designed to offer comfort and efficiency.

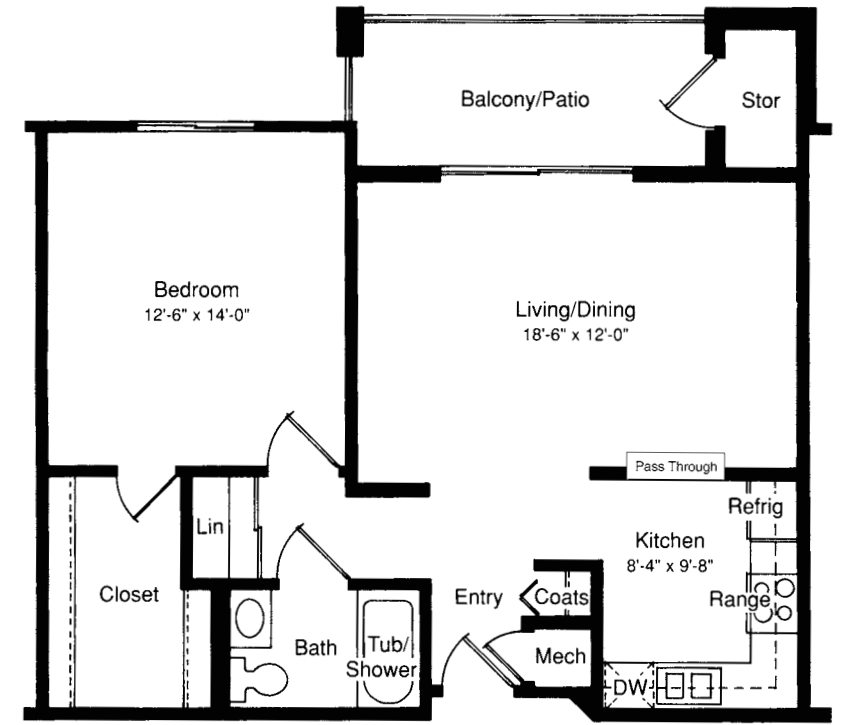
From the cozy Studio Apartment to the spacious Two-Bedroom Cottage, each residence at Emerald Heights will make you feel right at home.

These floor plans reflect our standard home styles. Actual floor plans may vary.

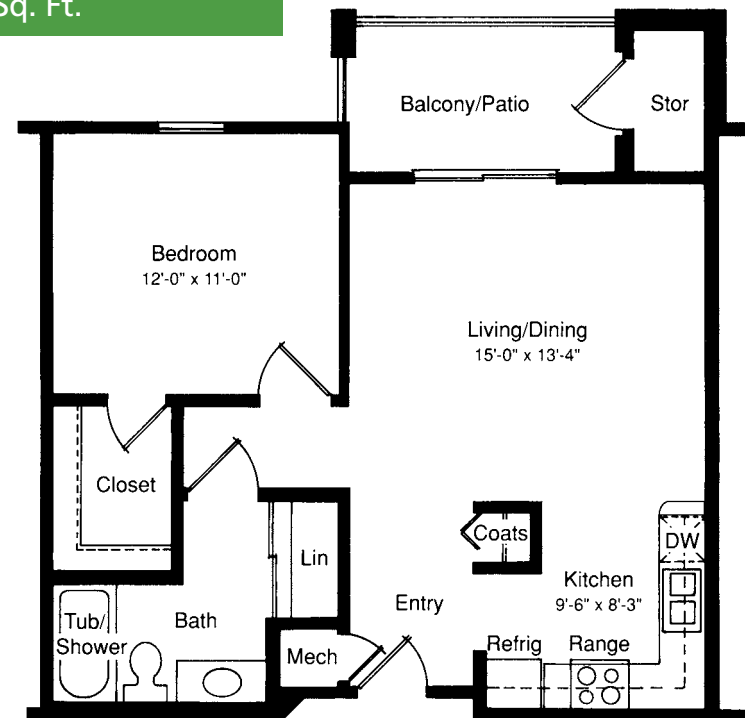
Studio "A"
410 Sq. Ft.



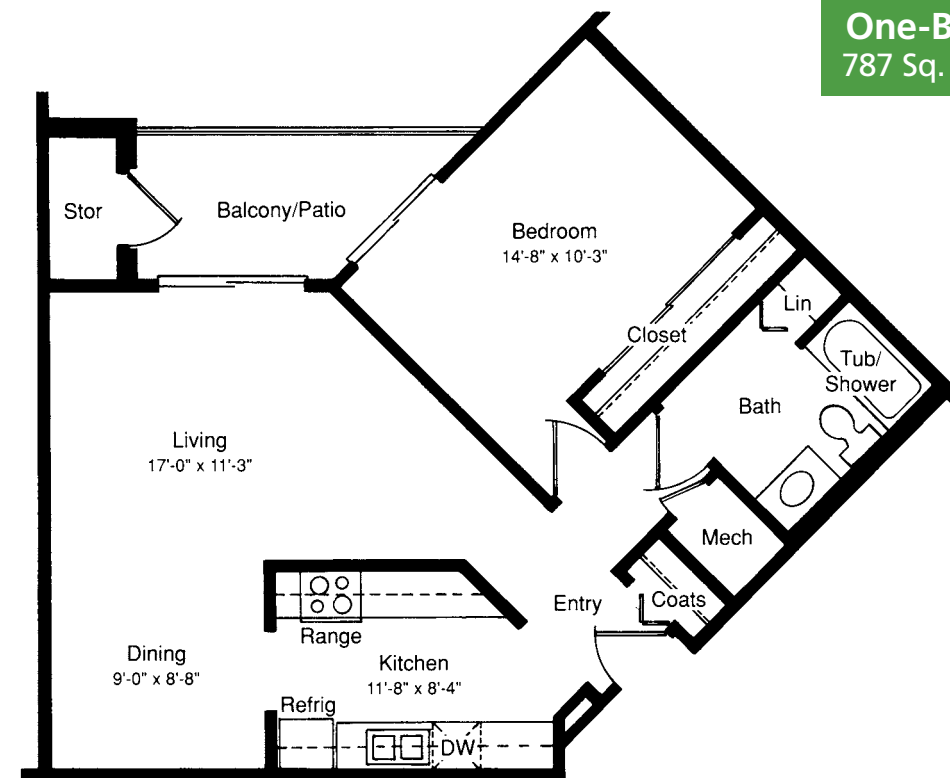
One-Bedroom "C"
794 Sq. Ft.



One-Bedroom "B"
701 Sq. Ft.

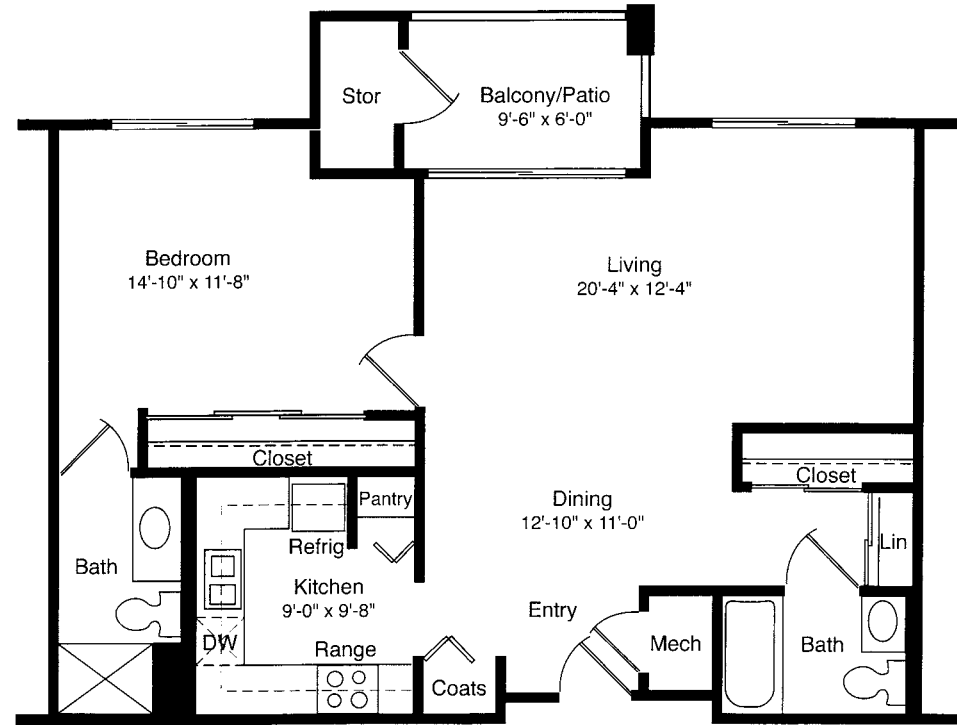


One-Bedroom "H"
787 Sq. Ft.

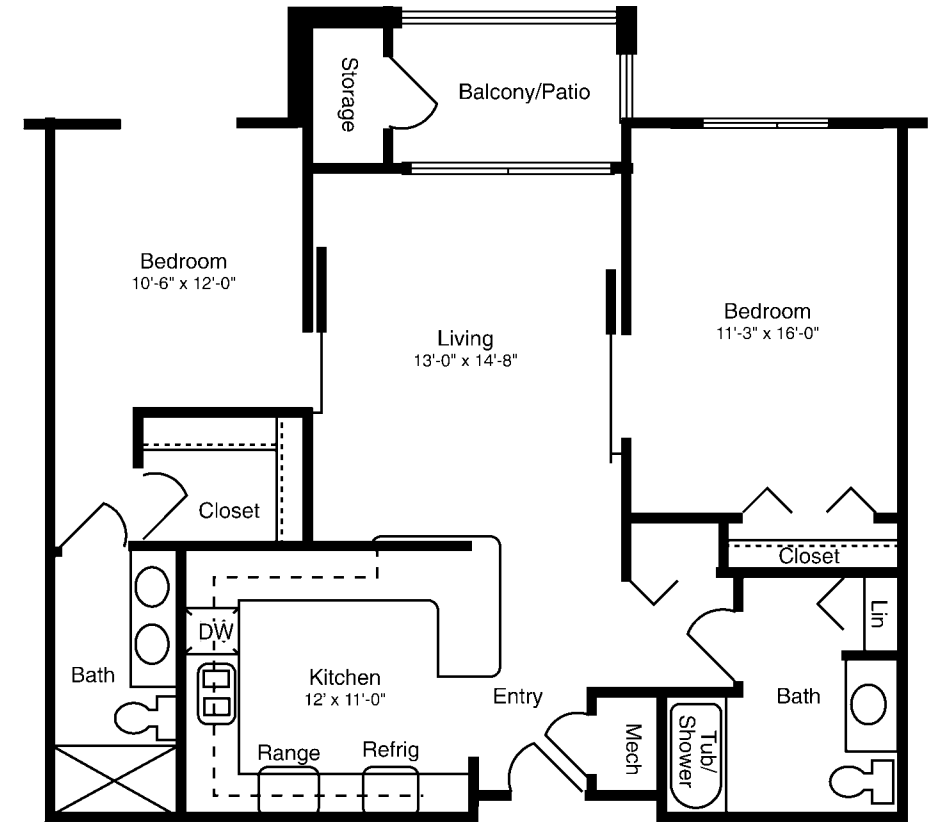




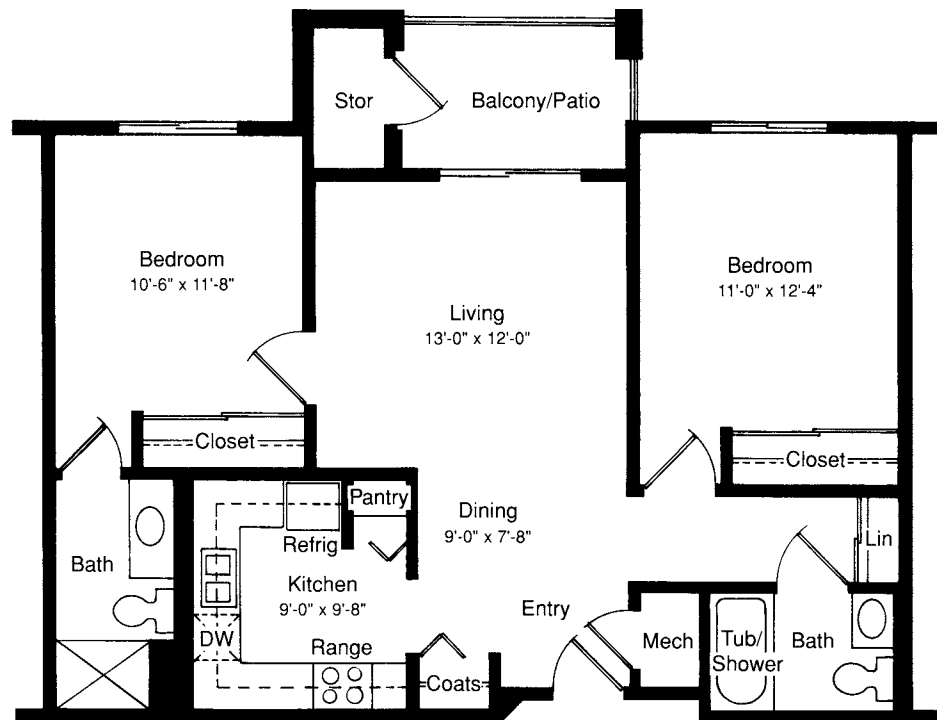
One-Bedroom "D1"
904 Sq. Ft.



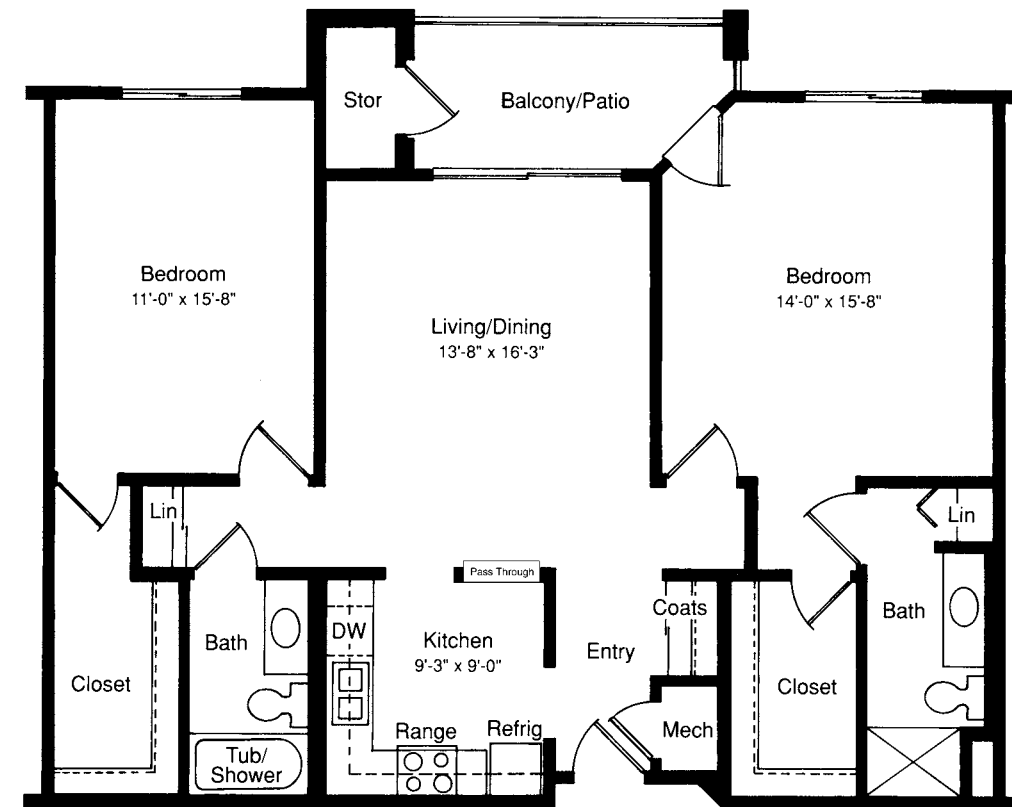
One-Bedroom "E"
1,087 Sq. Ft.



Two-Bedroom "D"
904 Sq. Ft.



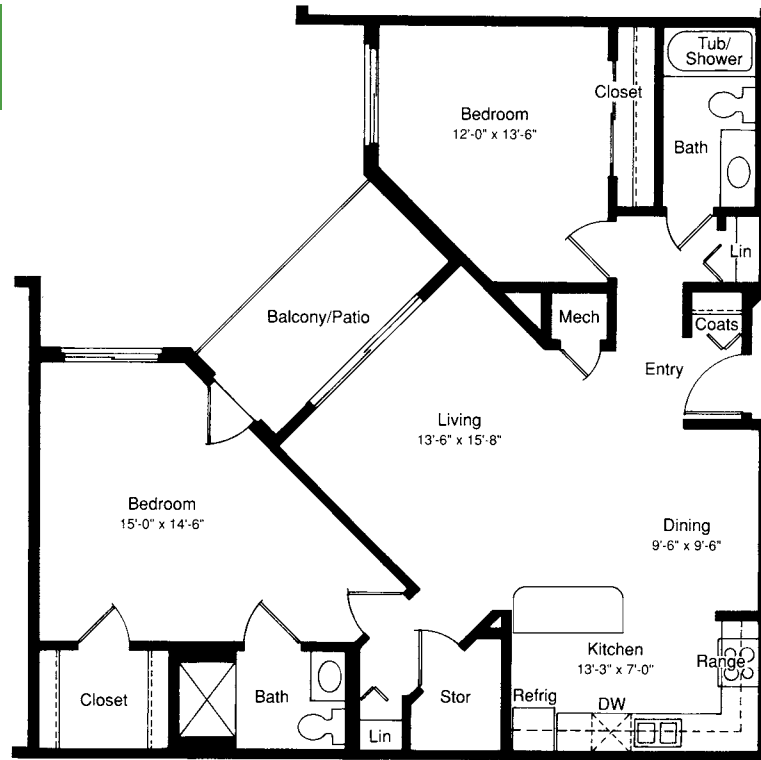
Two-Bedroom "F"
1,205 Sq. Ft.



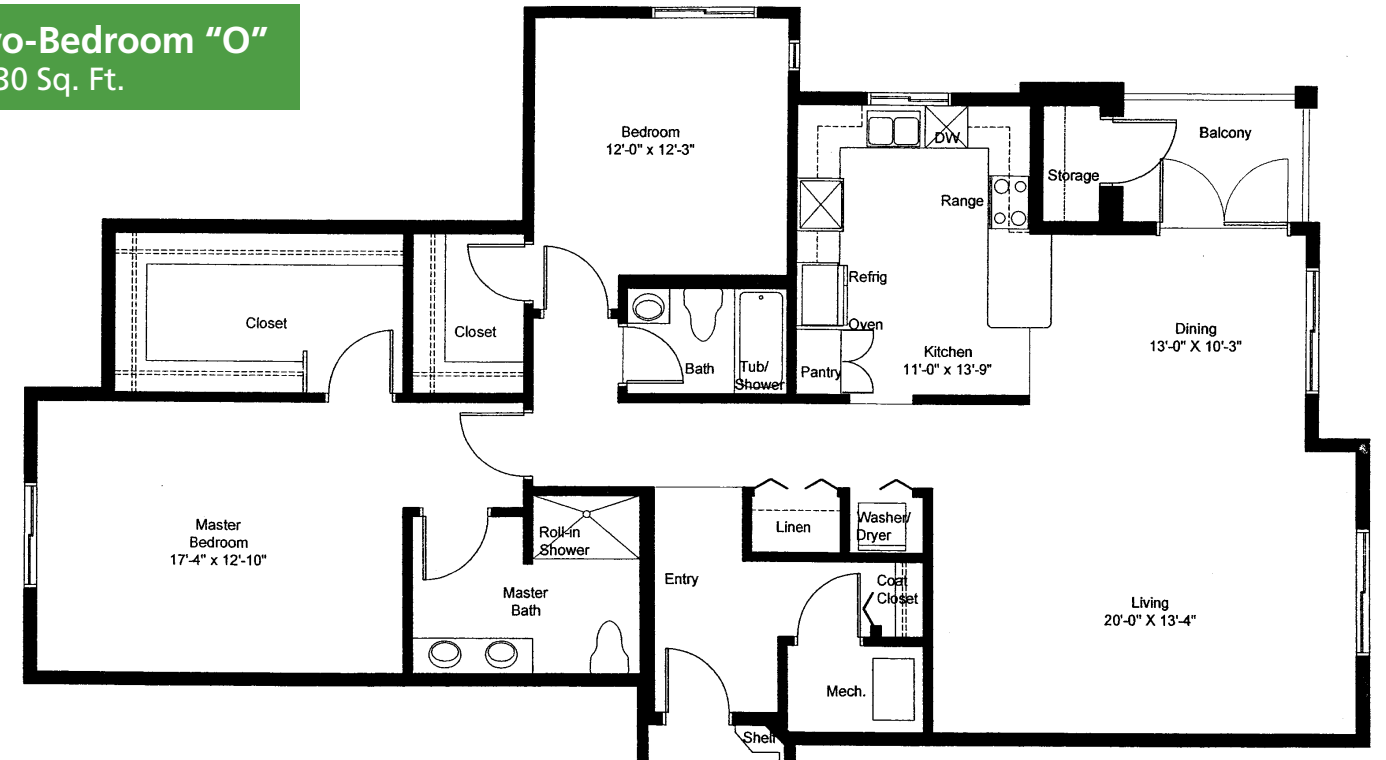
TWO-BEDROOM APARTMENTS



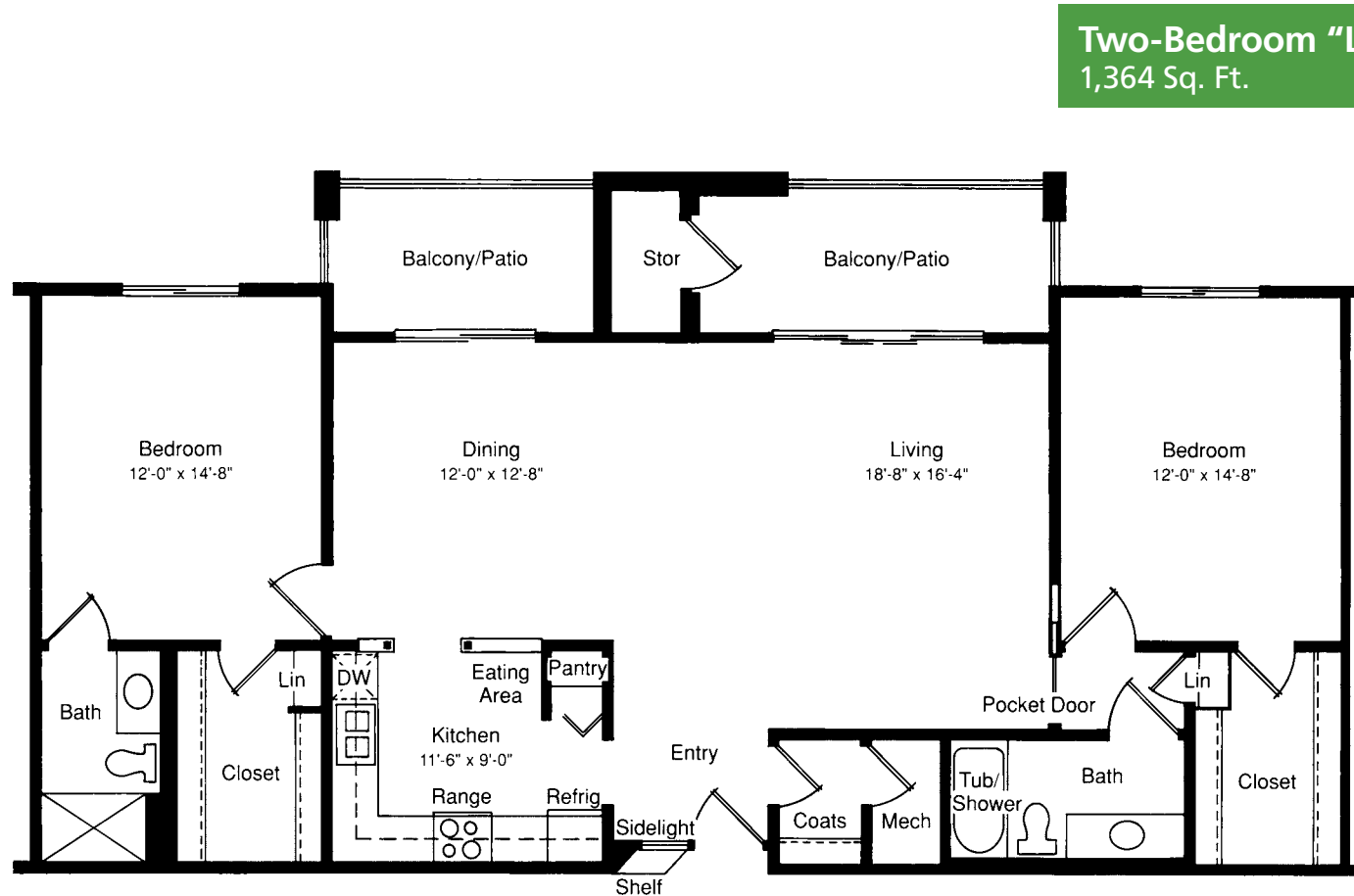
Two-Bedroom "G"
1,137 Sq. Ft.



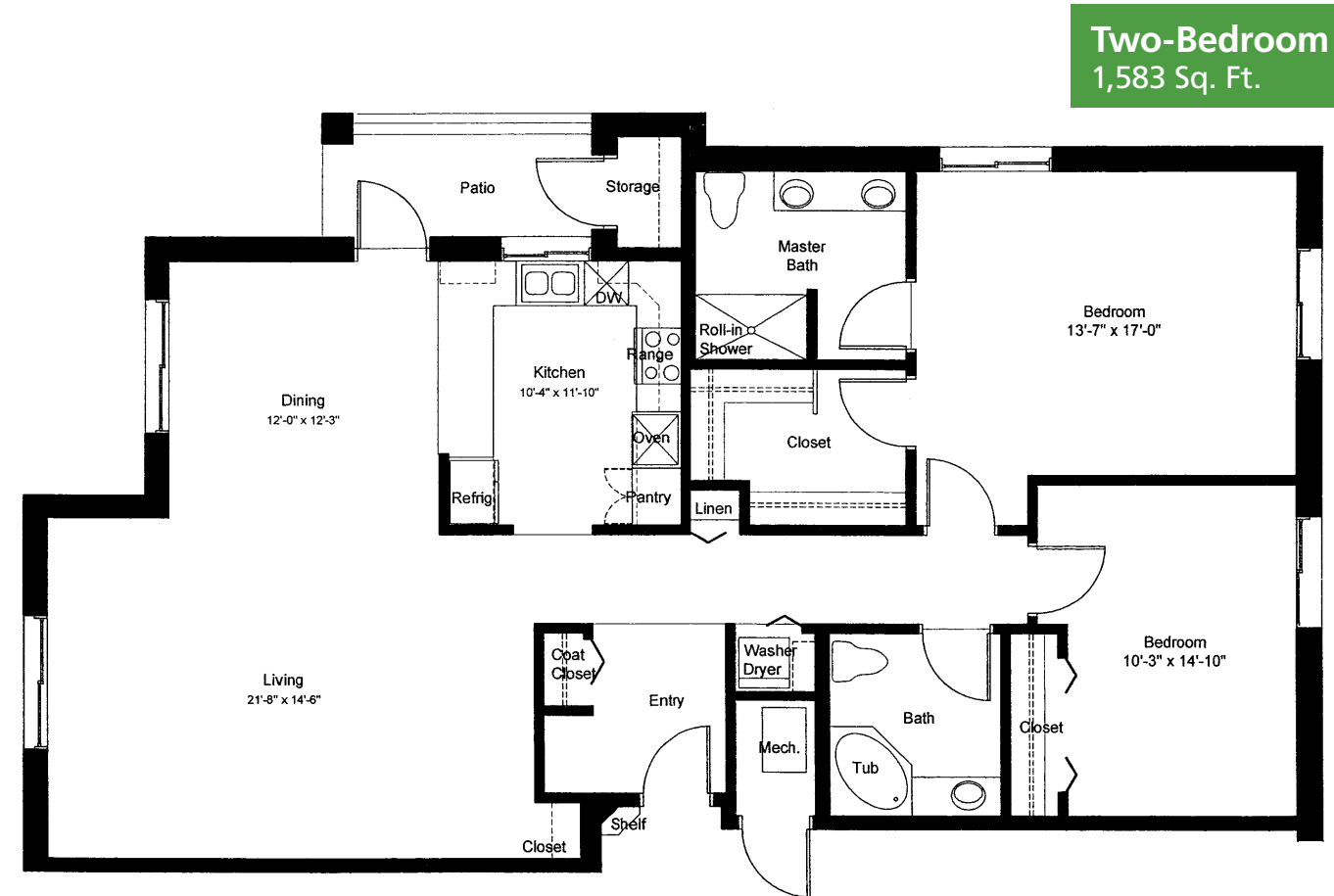
Two-Bedroom "O"
1,630 Sq. Ft.



Two-Bedroom "L"
1,364 Sq. Ft.

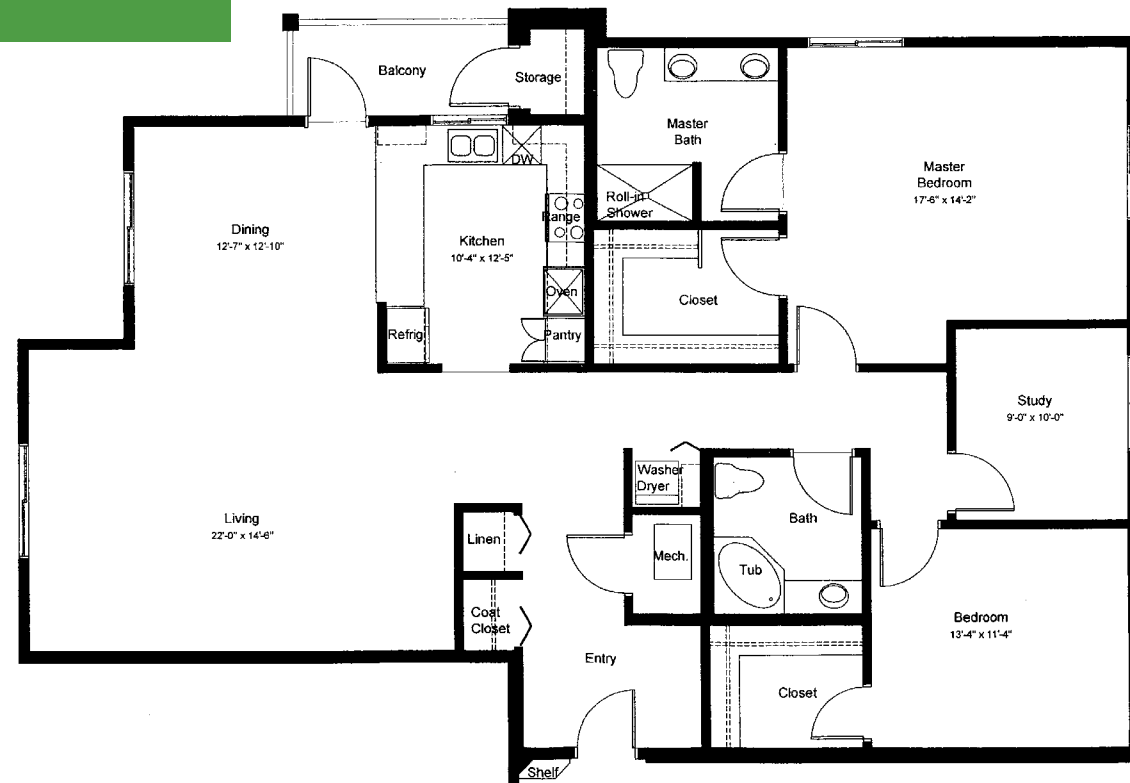


Two-Bedroom "P"
1,583 Sq. Ft.

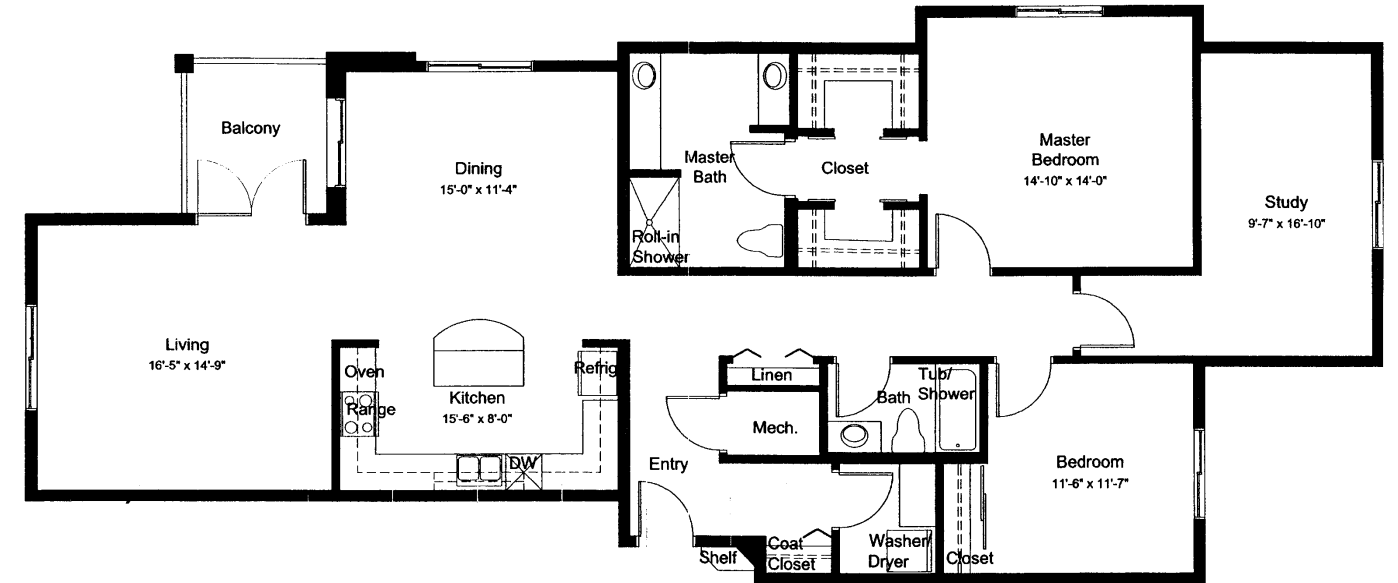




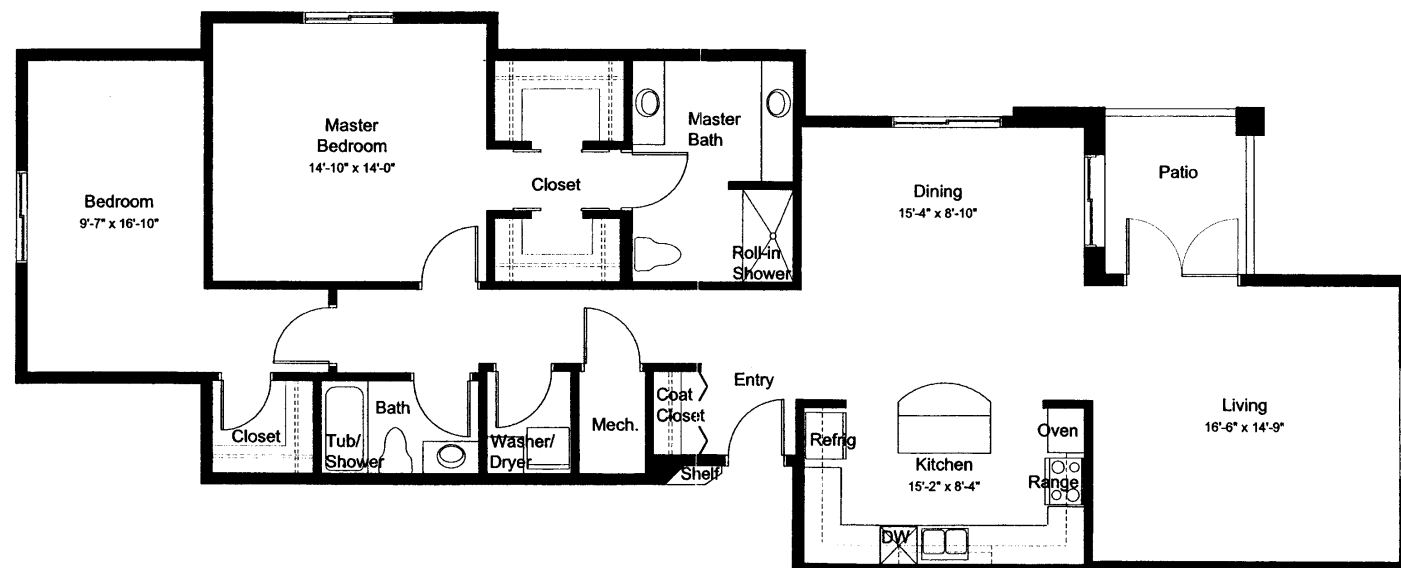
Two-Bedroom + Study "Q"
1,860 Sq. Ft.



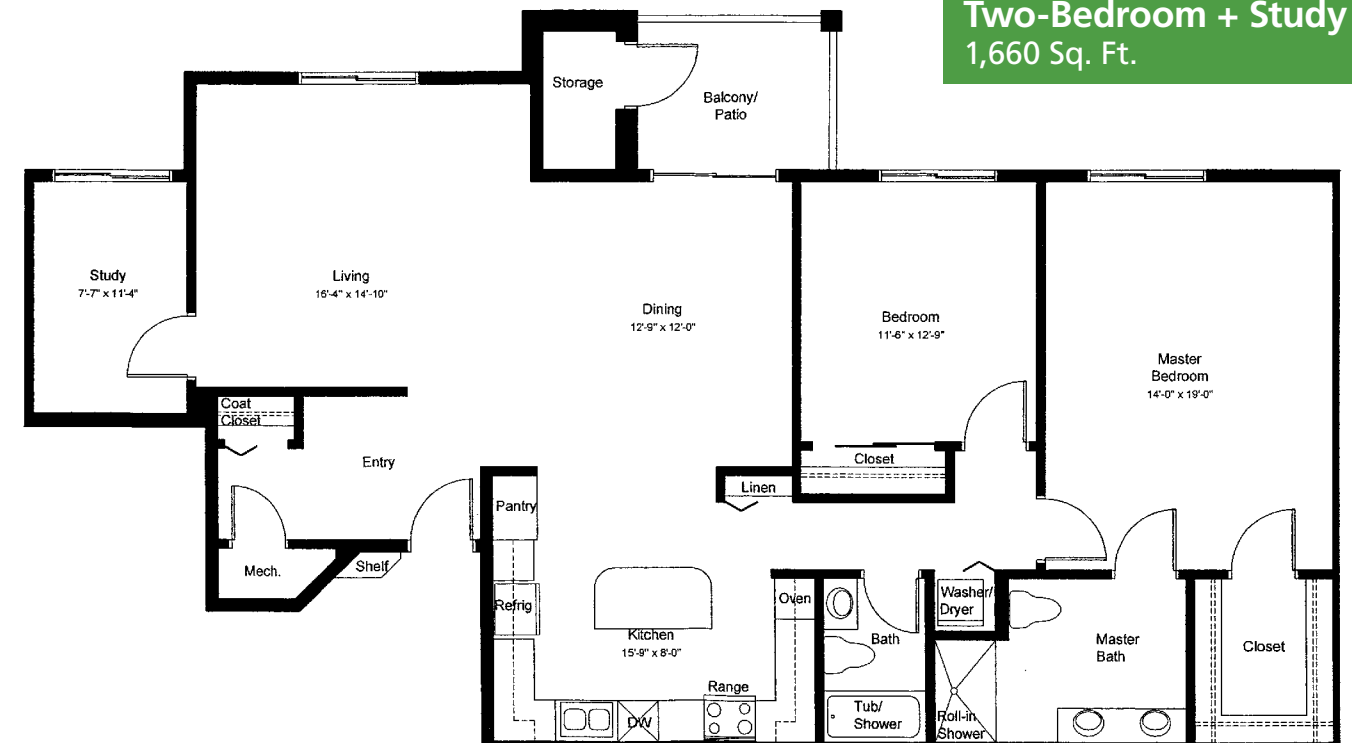
Two-Bedroom + Study "S"
1,850 Sq. Ft.



Two-Bedroom "R"
1,630 Sq. Ft.



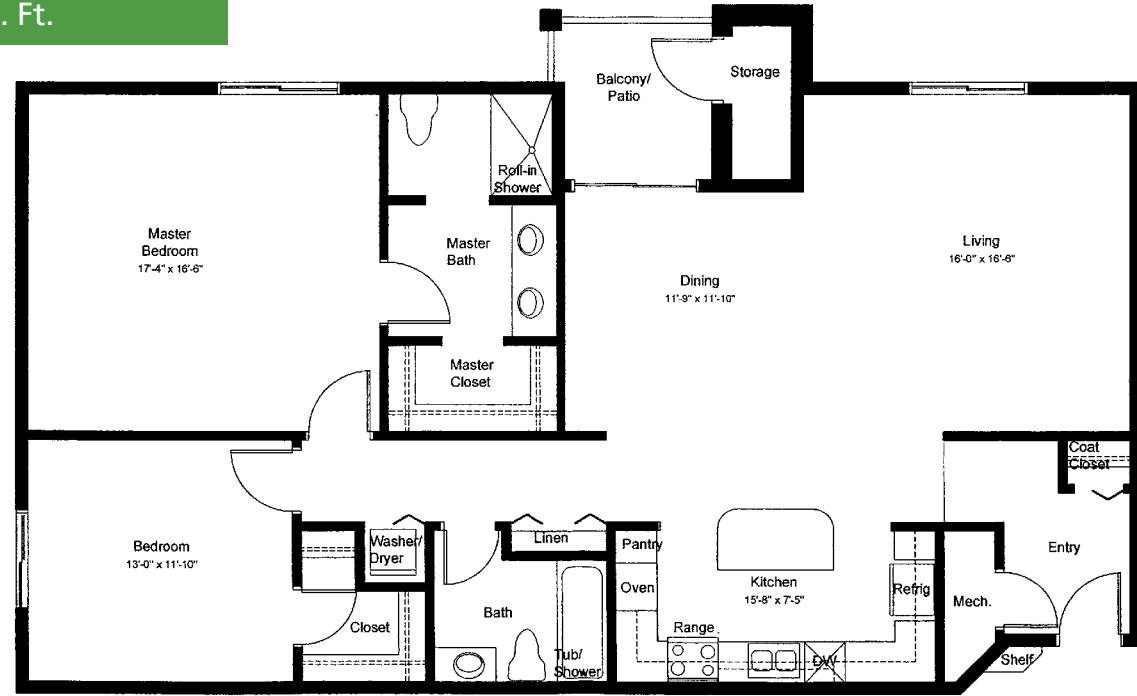
Two-Bedroom + Study "T"
1,660 Sq. Ft.



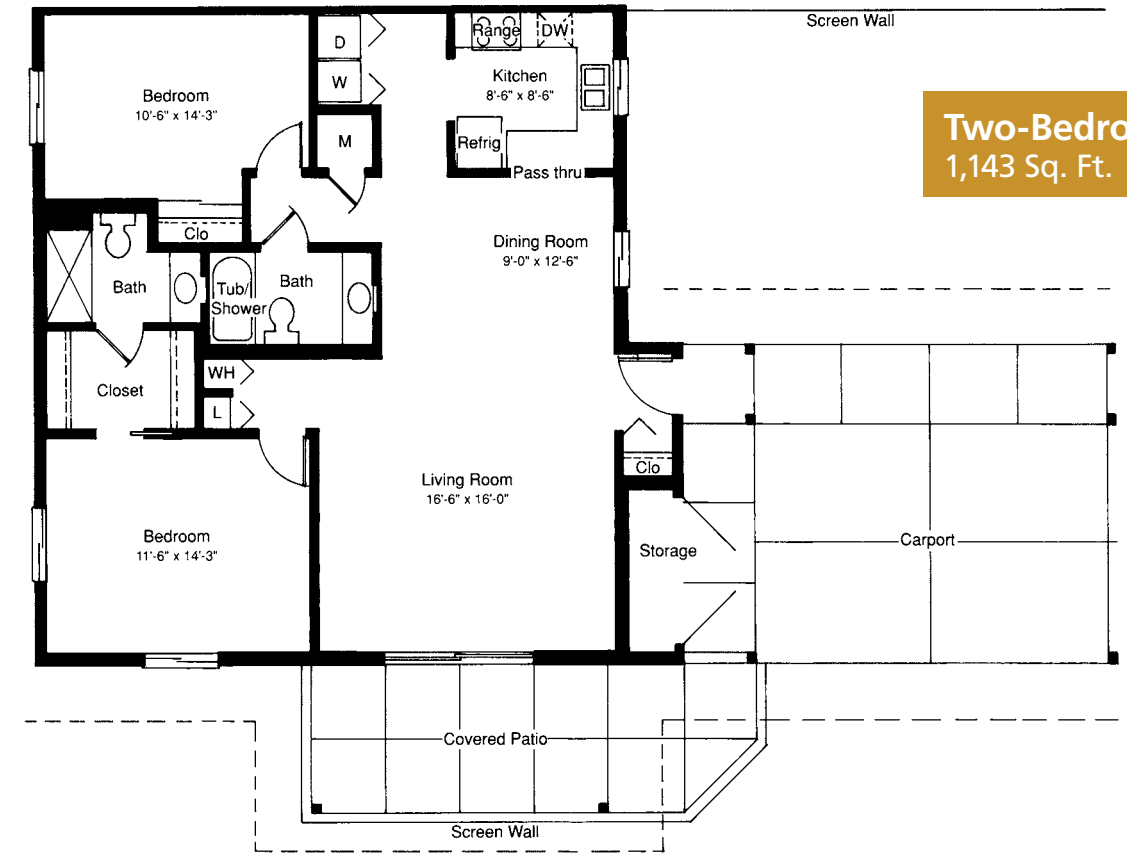
TWO-BEDROOM APARTMENTS



Two-Bedroom "U"
1,580 Sq. Ft.



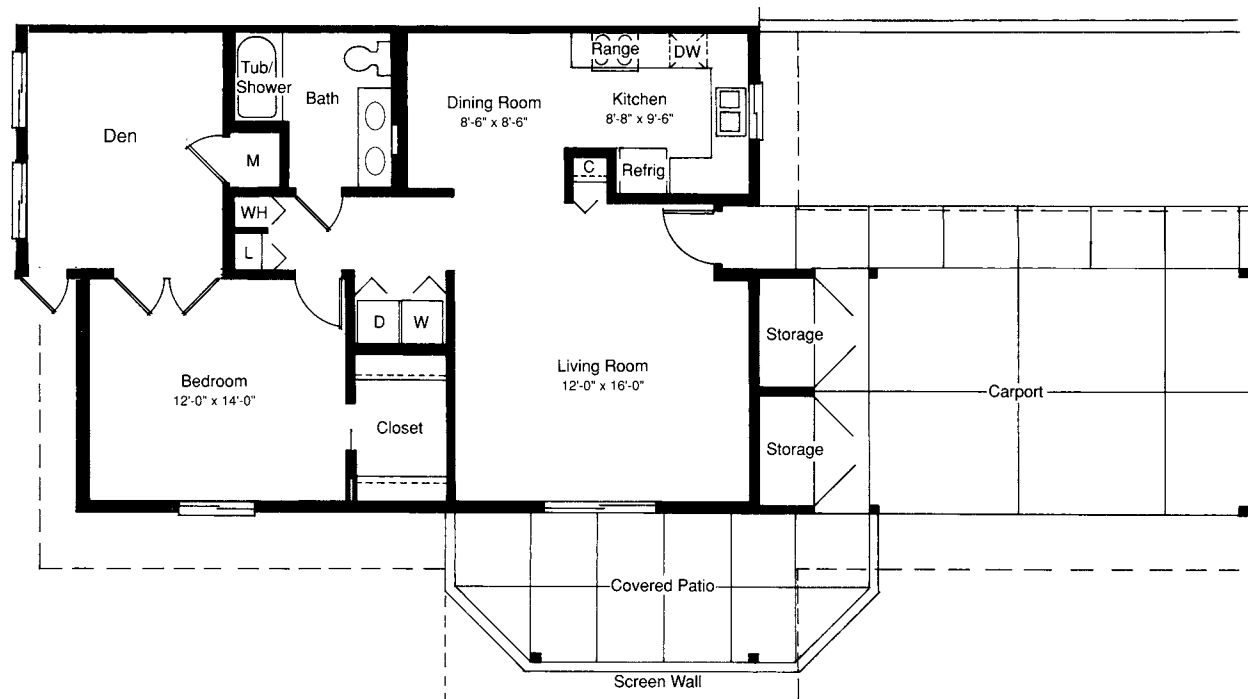
Two-Bedroom "J"
1,143 Sq. Ft.



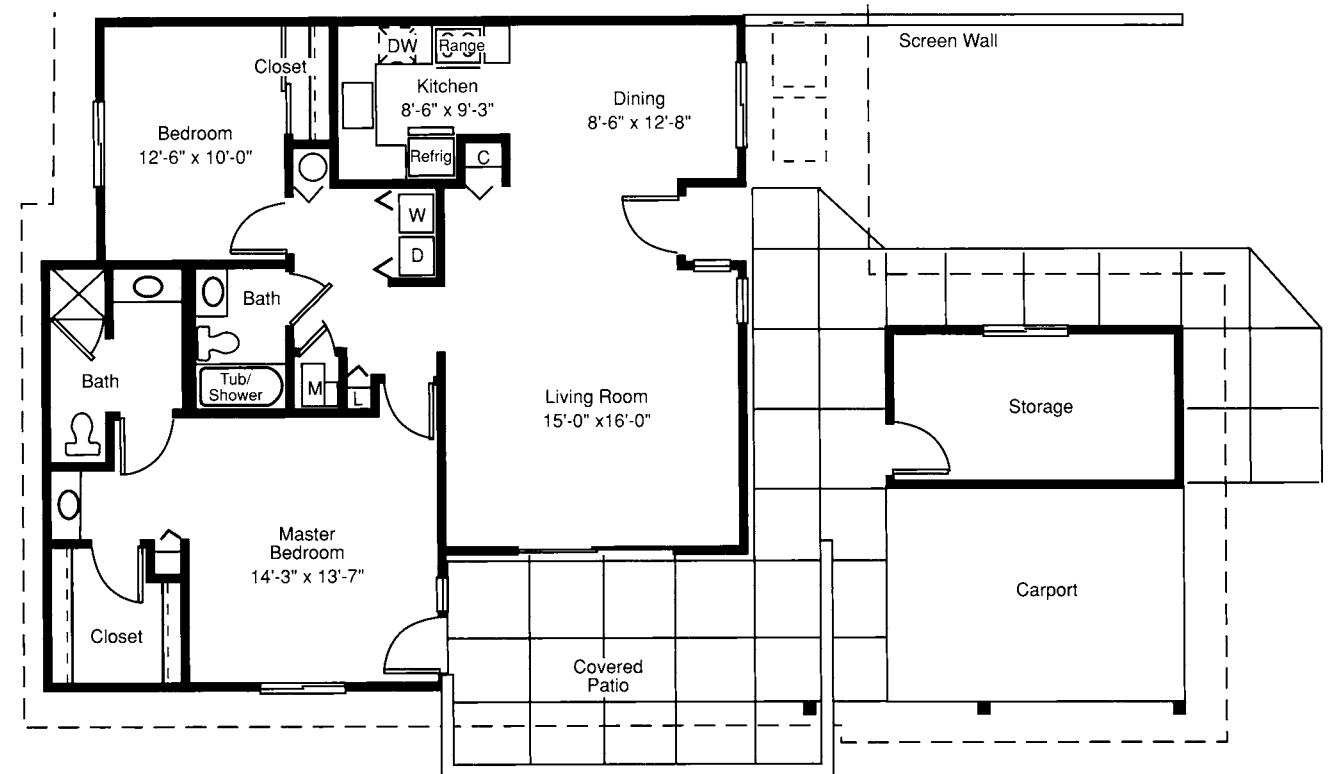
ONE- AND TWO-BEDROOM COTTAGES



One-Bedroom "I"
1 Bedroom / Den
900 Sq. Ft.

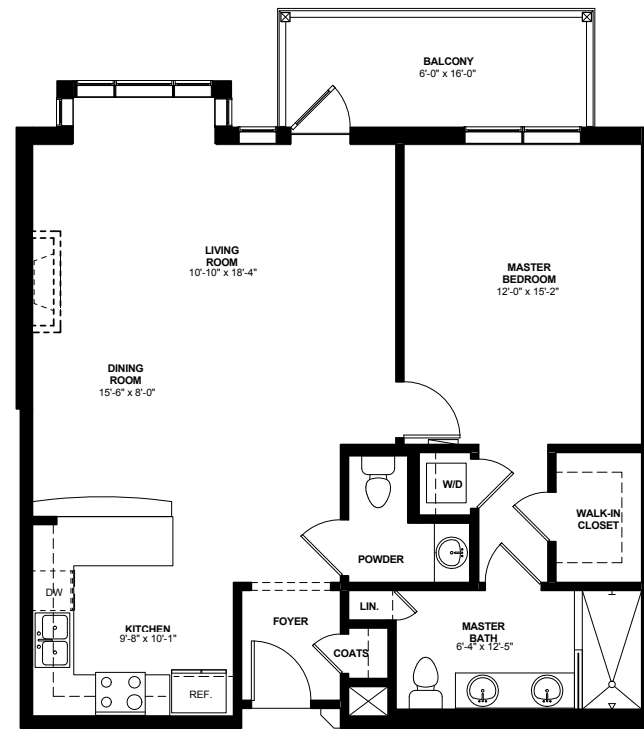


Two-Bedroom "K"
1,276 Sq. Ft.

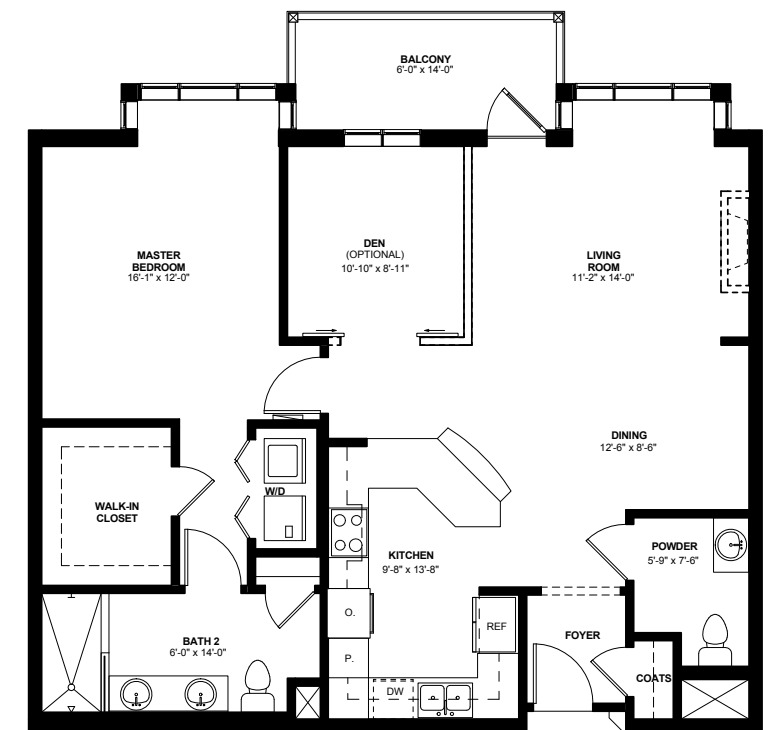




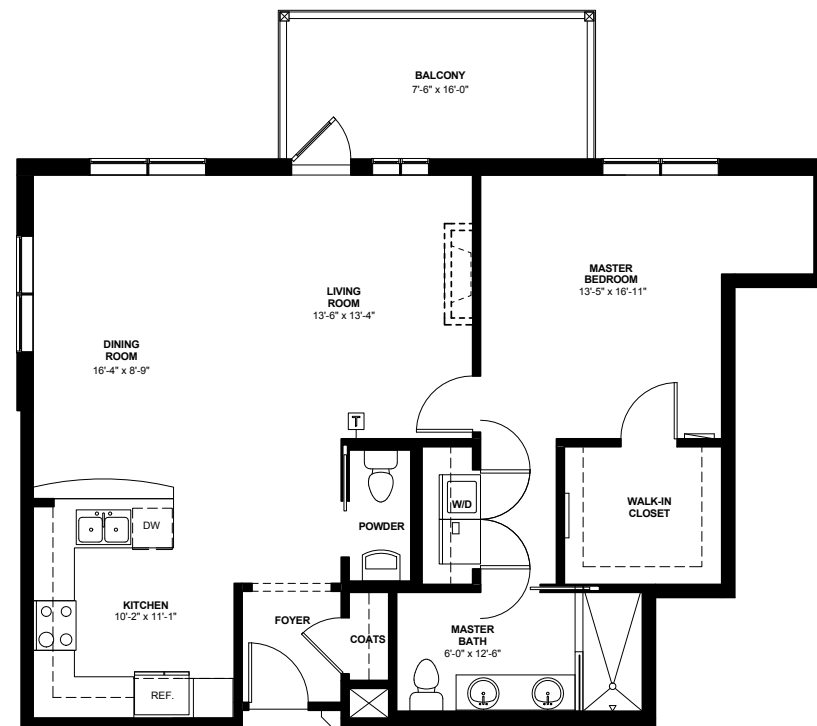
One-Bedroom "A.1"
1 Bedroom / 1½ Bathroom
895 Sq. Ft.



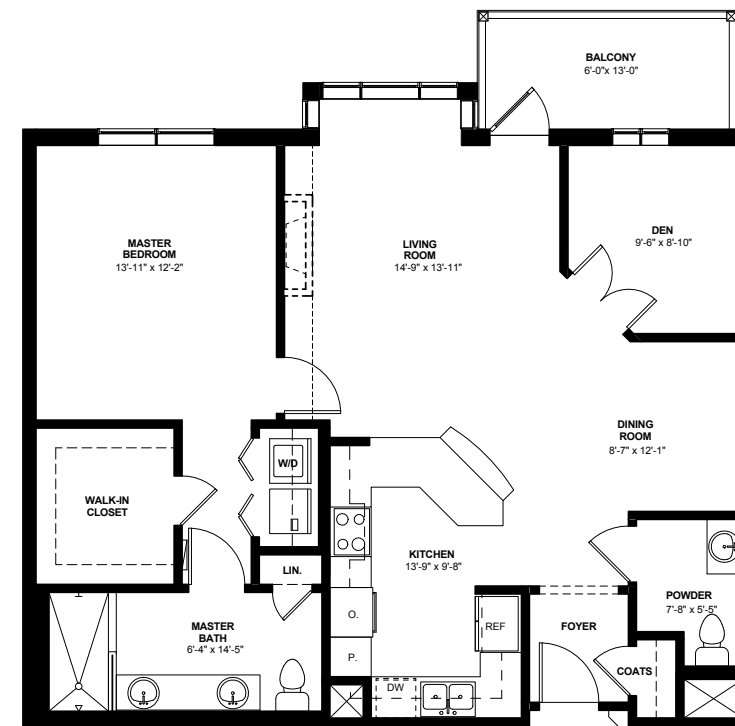
One-Bedroom "B.1"
1 Bedroom / Den /
1½ Bathroom
1,058 Sq. Ft.



One-Bedroom "A.2"
1 Bedroom / 1½ Bathroom
939 Sq. Ft.

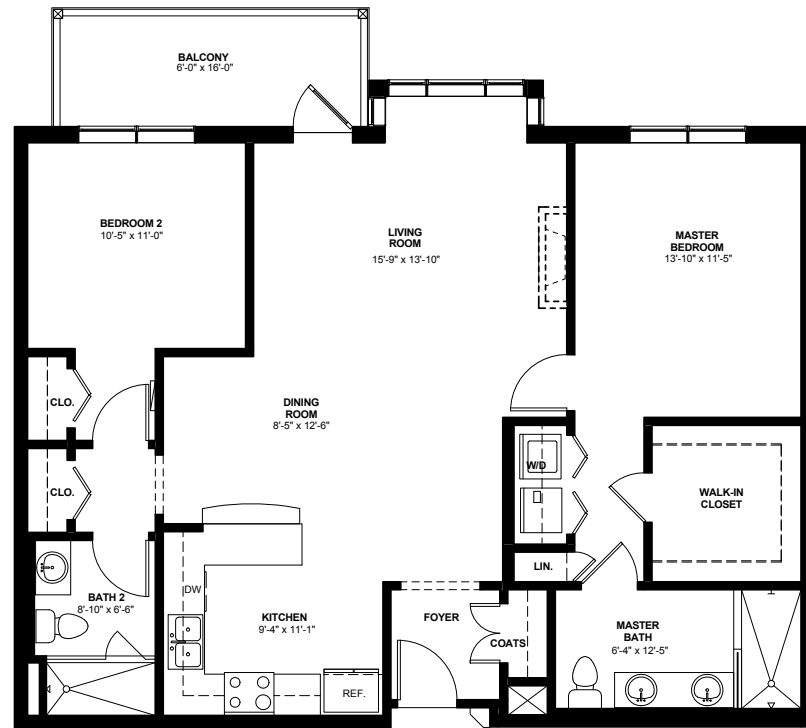


One-Bedroom "B.2"
1 Bedroom / Den /
1½ Bathroom
1,043 Sq. Ft.

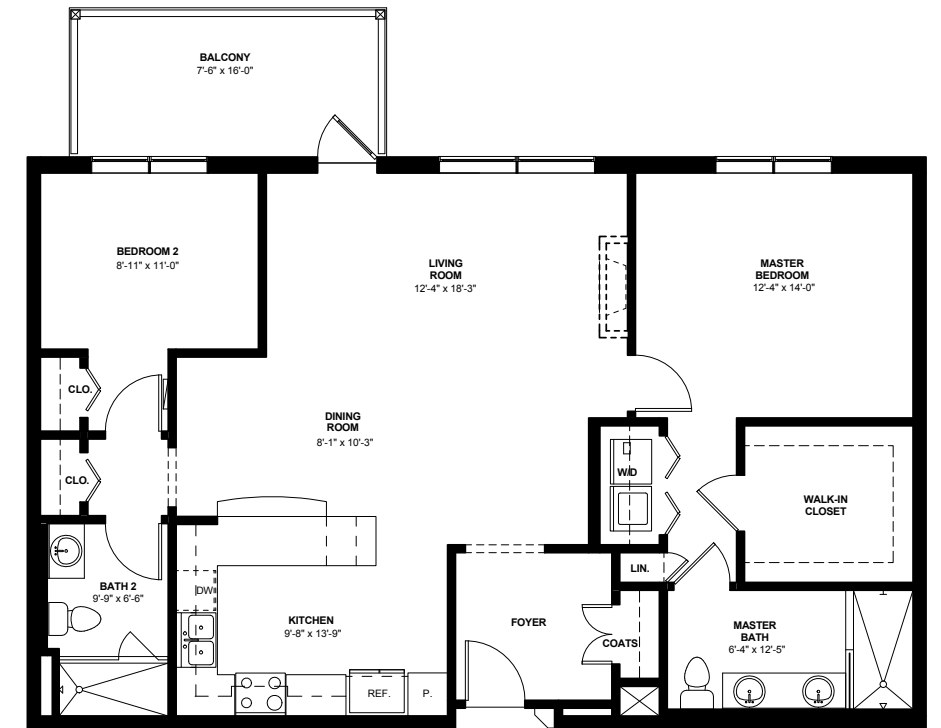




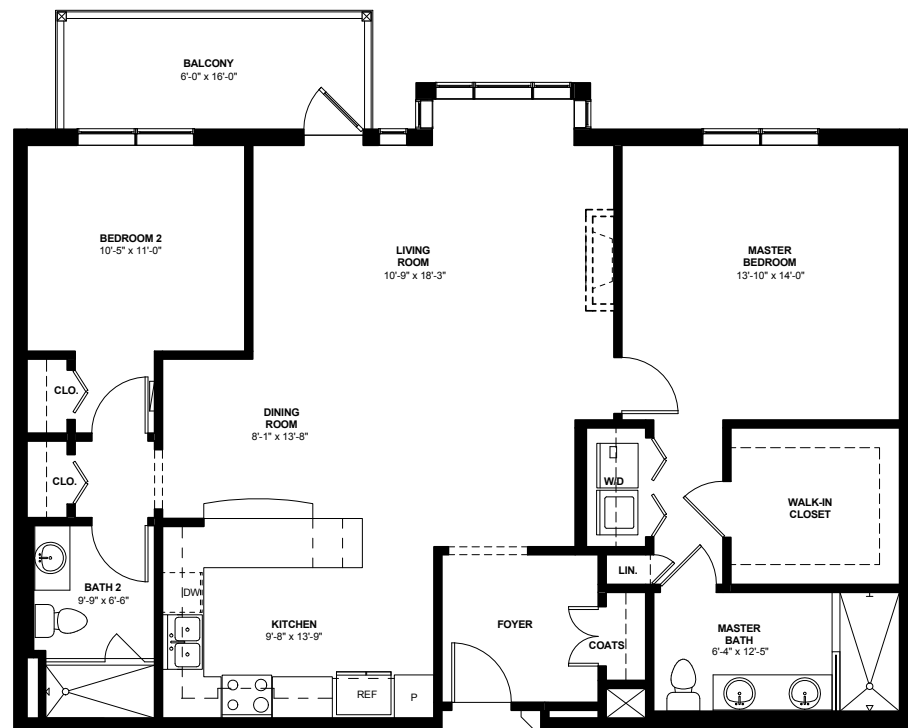
Two-Bedroom "C"
2 Bedroom / 2 Bathroom
1,134 Sq. Ft.



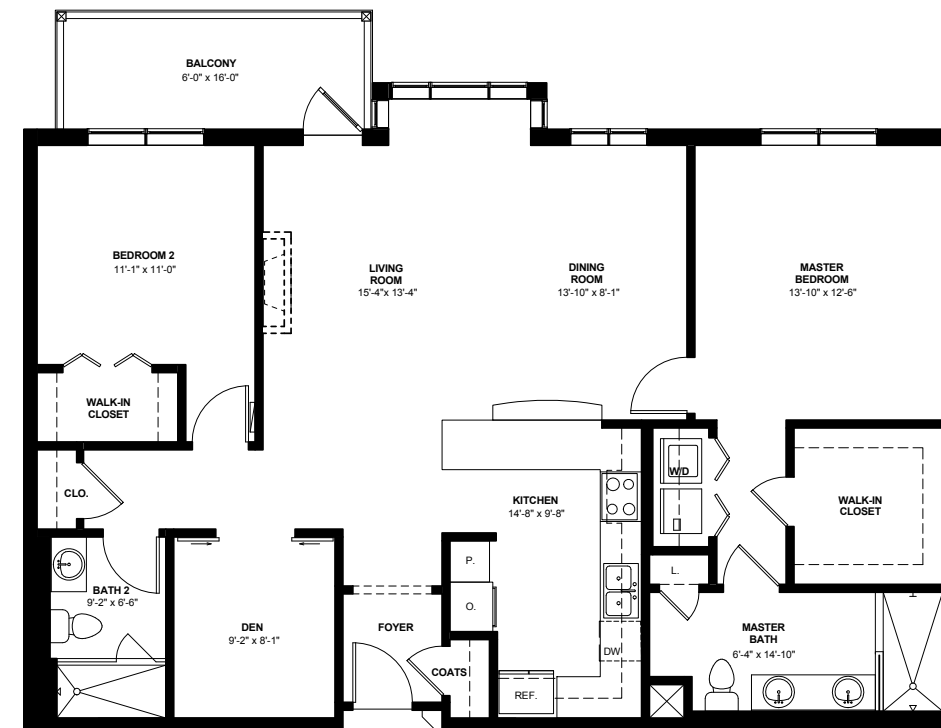
Two-Bedroom "D.2"
2 Bedroom / 2 Bathroom
1,192 Sq. Ft.



Two-Bedroom "D.1"
2 Bedroom / 2 Bathroom
1,277 Sq. Ft.

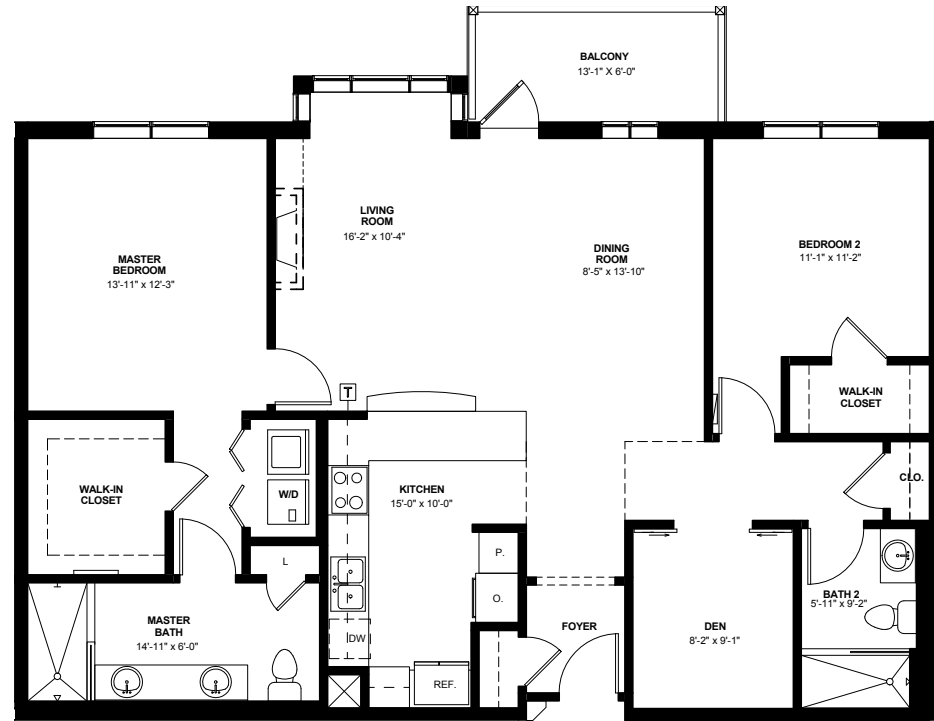


Two-Bedroom "E.1"
2 Bedroom / Den / 2 Bathroom
1,325 Sq. Ft.

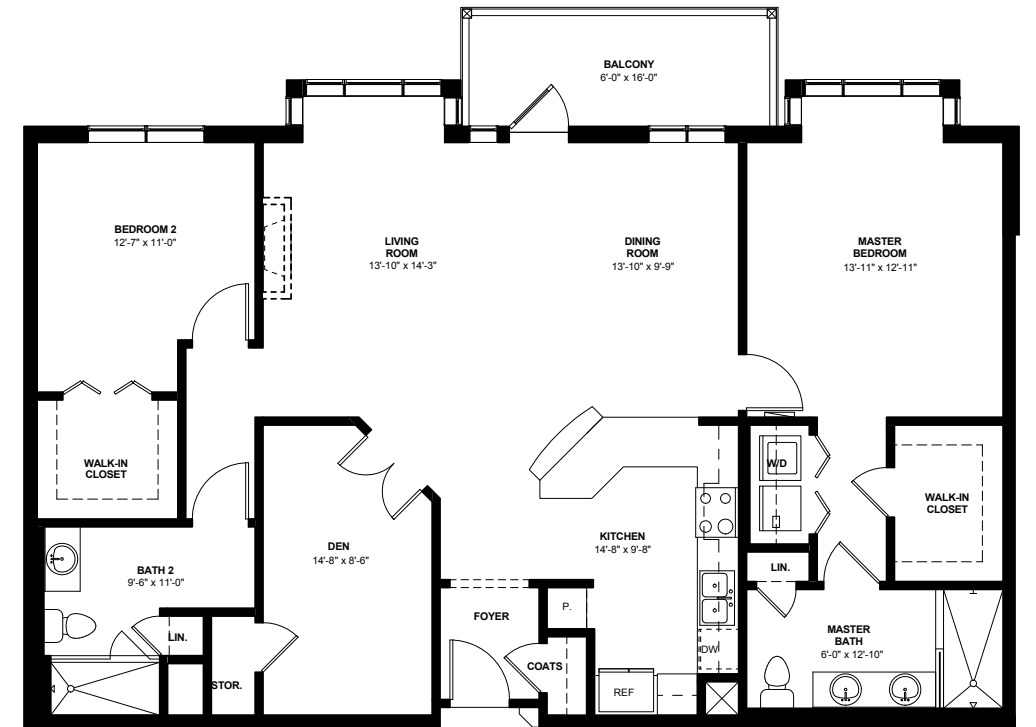




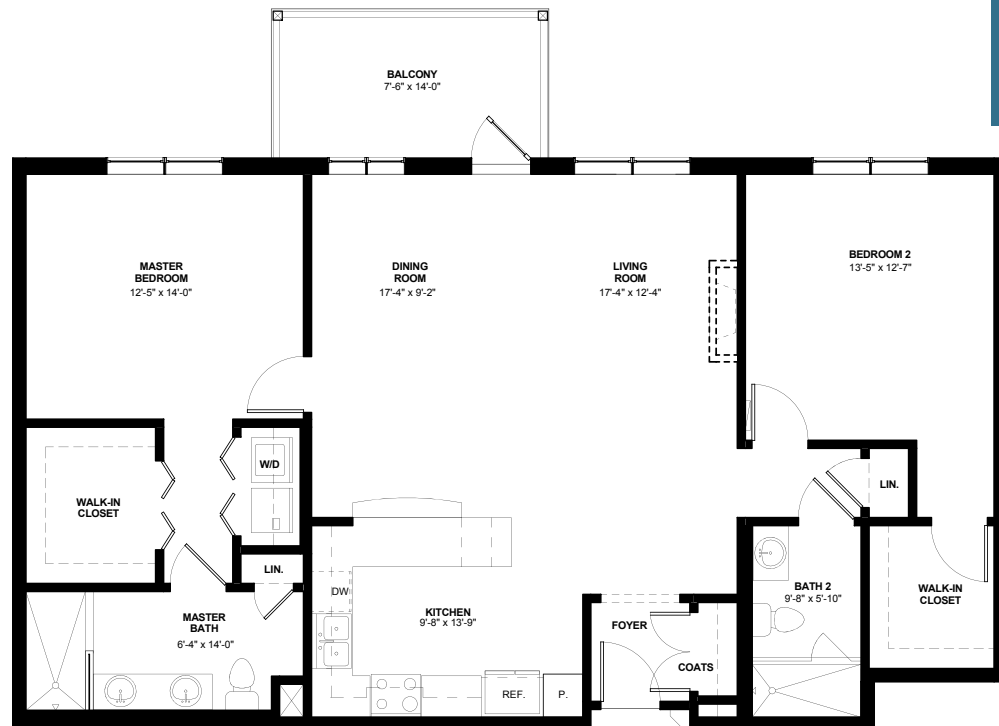
Two-Bedroom "E.2"
 2 Bedroom / Den /
 2 Bathroom
 1,325 Sq. Ft.



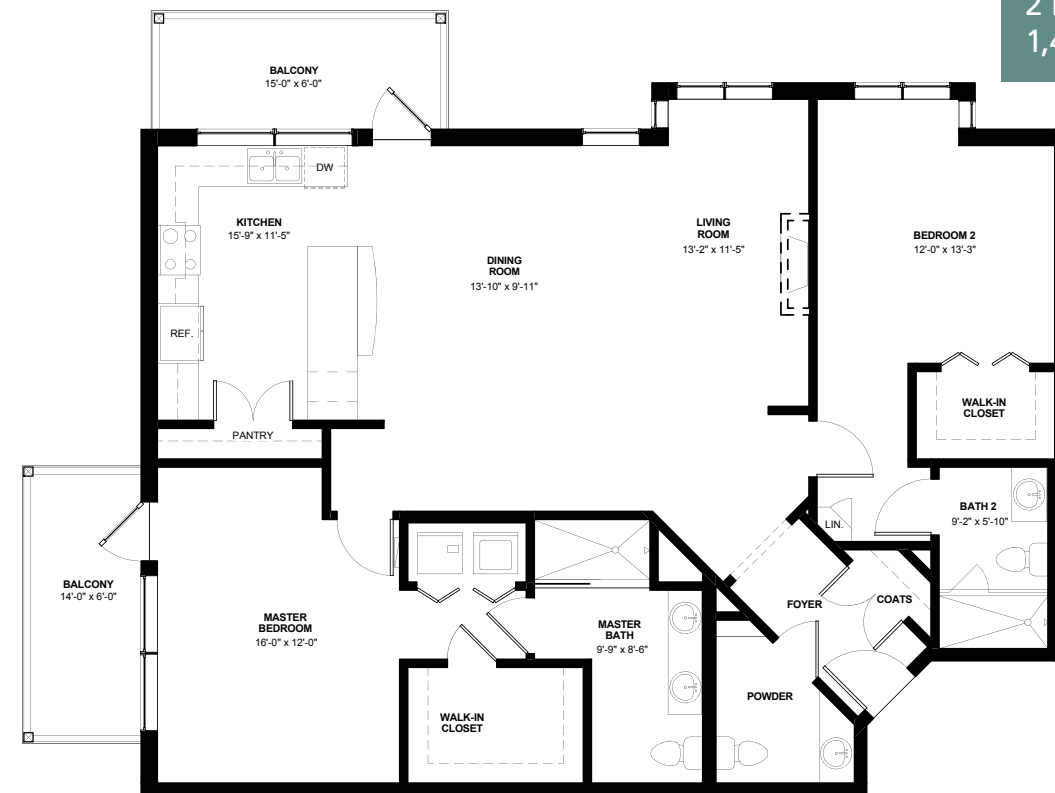
Two-Bedroom "F.1"
 2 Bedroom / Den /
 2 Bathroom
 1,425 Sq. Ft.



Two-Bedroom "E.3"
 2 Bedroom / 2 Bathroom
 1,332 Sq. Ft.

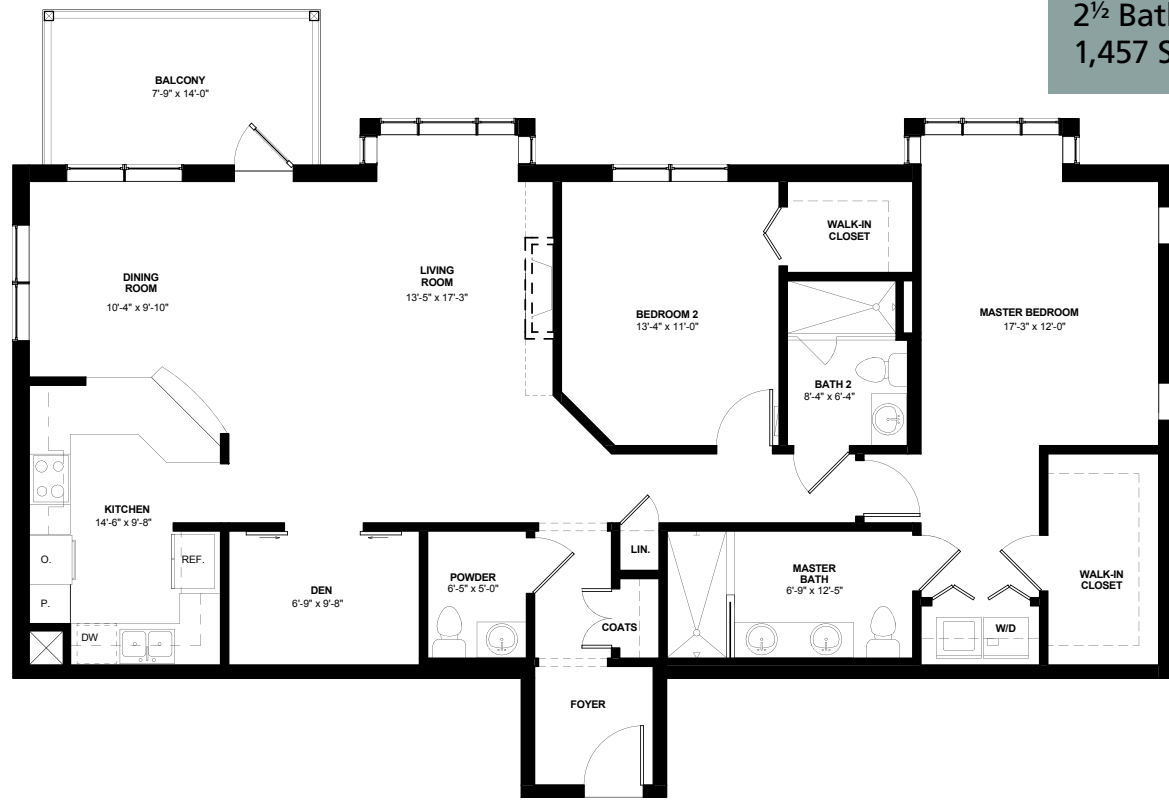


Two-Bedroom "F.2"
 2 Bedroom / 2½ Bathroom
 1,423 Sq. Ft.

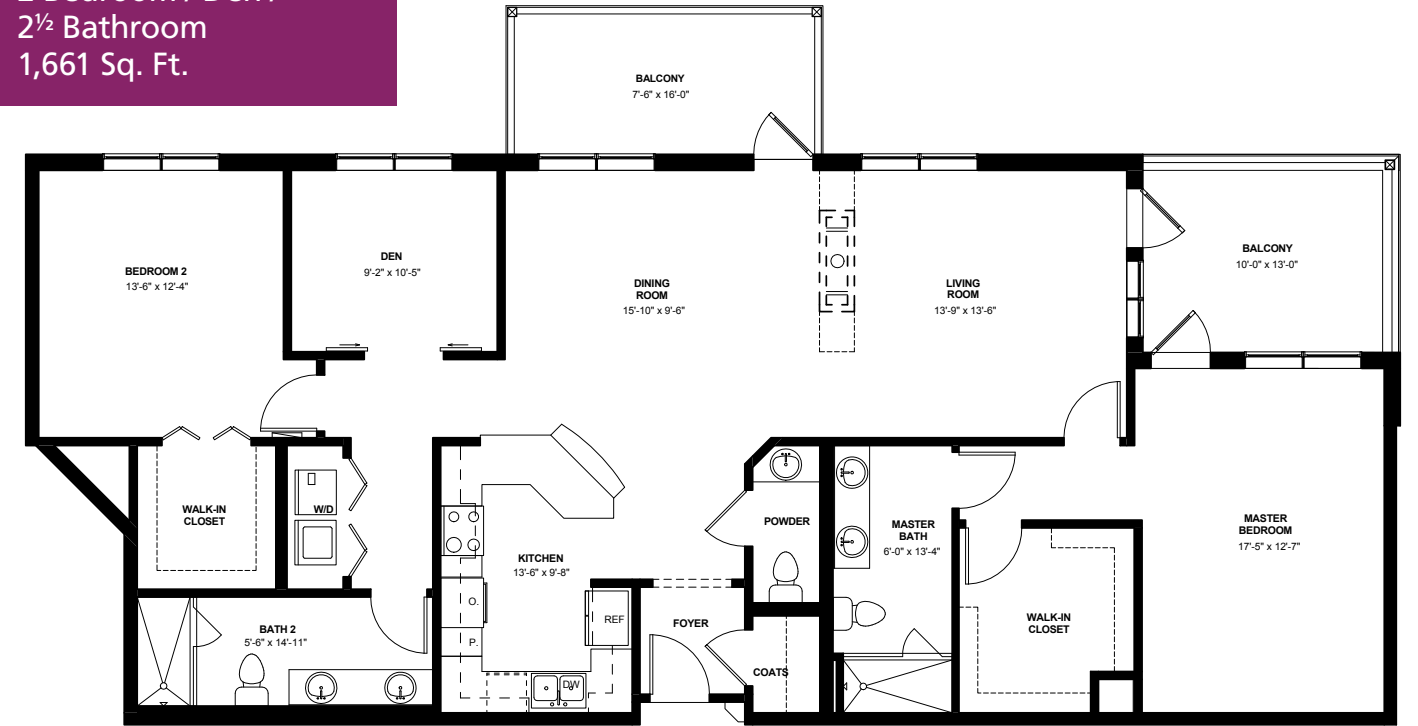




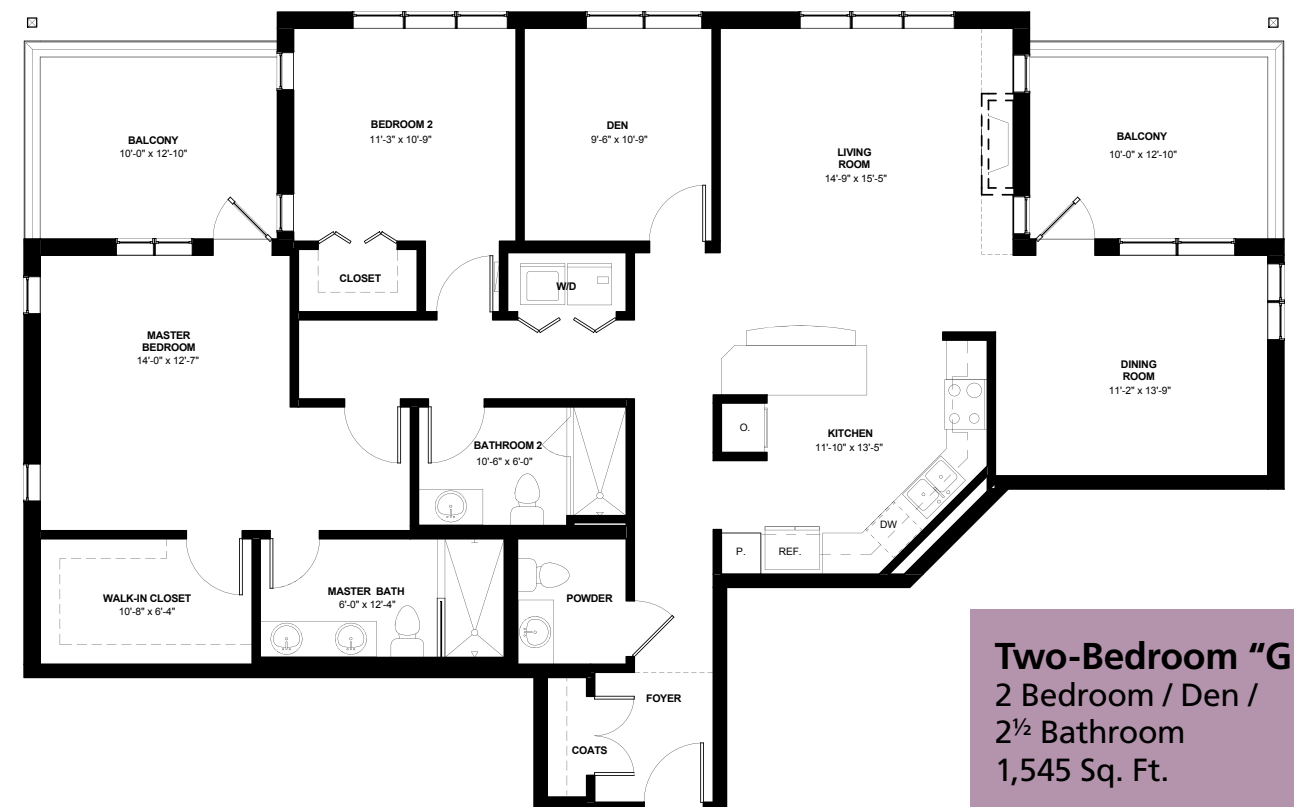
Two-Bedroom "F.3"
 2 Bedroom / Den /
 2½ Bathroom
 1,457 Sq. Ft.



Two-Bedroom "G.2"
 2 Bedroom / Den /
 2½ Bathroom
 1,661 Sq. Ft.



Two-Bedroom "G.1"
 2 Bedroom / Den /
 2½ Bathroom
 1,686 Sq. Ft.



Two-Bedroom "G.3"
 2 Bedroom / Den /
 2½ Bathroom
 1,545 Sq. Ft.

Frequently Asked Questions



I'm doing fine in my current home. Why should I consider a move to Emerald Heights now?

Life is bigger here than you ever imagined! Although no move is easy, postponing the decision about a move may mean you have less control over when that move eventually happens — and to where.

Residents here will tell you to make the move while you can take full advantage of everything Emerald Heights has to offer — not when you're pressured by failing health or overwhelmed by trying to keep up with home maintenance.

Come join us! What are you waiting for?

What are the standard features that will be provided in my apartment or cottage?

Each of the apartments and cottages at Emerald Heights comes equipped with a full kitchen, which includes a full-sized range/oven, dishwasher, microwave, garbage disposal, and refrigerator with automatic ice maker.

Your apartment or cottage home features individual climate control for both heating and cooling. And when the fresh air and mild climate of the Pacific Northwest beckons you outdoors, you can step out to your own private patio or balcony.

Is there high-speed Internet access available?

Yes. High-speed connection to the Internet is available for a reasonable fee through Emerald Heights' cable TV provider.

Isn't there a long waiting list at Emerald Heights?

Emerald Heights does maintain a priority list for future residents. In our experience, waiting times for members of our Future Residents list can vary from a few short months to several years, *depending primarily upon their readiness to move!*

I've been in my house for so many years that I'm not sure how to manage a move. Is there someone who can help with all the details?

Absolutely! A number of very reputable companies that specialize in helping seniors move are located in our area. We'll be happy to provide you with contact information for these specialists so that you can find exactly the help you need — from advice on holding a garage sale to hands-on help packing and unpacking your belongings.

Doesn't a move to a retirement community mean my current lifestyle will change?

Yes. Our current residents will tell you that their lives have changed — for the better! As an Emerald Heights resident, you'll have all the choices and freedoms you currently enjoy — but without the restrictions, burdens and chores of maintaining a house and yard. Our residents also find that their lives are enhanced by the variety of social, recreational, physical, educational, spiritual and volunteer opportunities offered here. Discover for yourself all that Emerald Heights has to offer!



A MEMBER OF EMERALD COMMUNITIES

10901 176TH CIRCLE NE • REDMOND, WA 98052 • EMERALDHEIGHTS.COM

